

Pere Noel Minamino

☎ 042-632-0214

URL <http://www.pere-noel.co.jp/>



- 📍 3-11-5 Nishikatakura, Hachioji-shi
- 🕒 9:30 - 20:00
- ✕ Open everyday
- 🚶 5 min. walk from JR Yokohama Line Hachioji-Minamino Station



Signature menu

Tokyo Hachioji Madeleine "Yamato"

Price	230yen/each
Available	Year-round
Ingredients used	Rice flour, honey, eggs (From Hachioji)

Hachioji Castella

Price	680yen/each
Available	Year-round
Ingredients used	Honey, eggs (From Hachioji)



*Other products include cakes made with milk from Hachioji and seasonal fruit from Hachioji.

Ryujinmaru Ichiba Hachioji

☎ 042-649-7942

URL <https://ja-jp.facebook.com/ryujinmaruichiba/>



- 📍 6-4 Asahi-cho, Hachioji-shi
- 🕒 Mon. - Fri. 11:30 - 14:00/17:00 - 23:00
Saturdays 17:00 - 23:00
- ✕ Sundays
- 🚶 3 min. walk from JR Hachioji Station North Exit



Signature menu

TOKYO X Porkchops

Price	1,480yen
Available	Year-round
Ingredients used	TOKYO X Pork from Sawai Farm, Takatsuki-machi

Log-Grown *Shiitake* Mushroom Grilled with Butter and Soy Sauce

Price	620yen
Available	Year-round
Ingredients used	Log-grown <i>shiitake</i> mushrooms (From Ishikawa-machi, Hachioji)



Labo Grano Melissa

☎ **042-686-2814**

URL <http://kkmelissa.web.fc2.com/>



- 📍 3-18-10 Dai-machi, Hachioji-shi
- 🕒 Thursdays 14:30 - 17:30
Fri. - Sun. 13:00 - 17:30
- ✕ Mondays, Tuesdays, Wednesdays
- 🚶 10 min. walk from JR Chuo Line Nishi-Hachioji Station South Exit



Signature menu

Hachioji Ginger Cheesecake

Price 400yen (tax excl.)

Available Year-round

Ingredients used Hachioji ginger (From Hachioji)

Passion Fruit Cake

Price 400yen

Available Year-round

Ingredients used Passion fruit (From Hachioji)



*The restaurant also holds handmade pasta lessons using homemade herbs.

Handmade Soba Noodle Tsukushi-ya

☎ **042-651-1987**

URL <https://sobatsukushiya.jimdo.com/>



- 📍 116-16 Dairakujimachi, Hachioji-shi
- 🕒 11:30 - 15:00 (Last Call 14:30)
- ✕ Thursdays
- 🚶 From Hachioji Station, take the bus and get off at "Kobe Kaikanmae". 1 min. walk from the bus stop.



Signature menu

Wasabi Dinner

Price 1,700yen (excl.)

Available Okutama wasabi is available every year from May to February the next year.

Ingredients used Okutama wasabi

Joten Seiro Set Meal

Price 1,912yen (excl.)

Available Year-round

Ingredients used Seasonal vegetables from Hachioji, assorted mushrooms from Hinohara



Kokoro Aji Ajinao



☎ 042-663-0262

URL <http://ajinao.com/>

- 📍 B1F Agora Bldg., 1-8-25 Mejirodai, Hachioji-shi
- 🕒 17:00 – 22:00
(Lunch is currently available by reservation)
- ✕ Wednesdays (with irregular holidays)
- 🚶 3 min. walk from Keio Takao Line Mejirodai Station



Signature menu

Set menu that typically uses
"Specialty Tokyo ingredients" and "Dashi"

Price 3,000yen~

Available Year-round

Ingredients Seasonal vegetables and fruits from within Tokyo (Mizuho Igaki farm, etc.), eggs (Machida-shi Kato-Farm), seasonings (Akiruno's Kondojozo, Inc.), and Edo Tokyo vegetables

Hot-pot and simmered meal that uses
"Specialty Tokyo ingredients" and "Dashi"

Price 500yen~

Available Year-round (Hot pot is available October to March)

Ingredients used: Seasonal vegetables and fruits from within Tokyo (Mizuho Igaki farm, etc.), eggs (Machida-shi Car-to-Farm), seasonings (Akiruno Kondojozo, Inc.), and Edo Tokyo vegetables



Handmade *Soba* Noodles

Kanzouan



☎ 042-528-2424

URL <http://soba-kanzouan.sun.bindcloud.jp/>

- 📍 1-15-7 Fujimi-cho, Tachikawa-shi
- 🕒 11:30 – 14:00/18:00 – 21:00
- ✕ Lunch on Tuesdays and Wednesdays (Still open at night)
- 🚶 5 min. walk from JR Nishi-Tachikawa Station



Signature menu

Rollled Omelet

Price 520yen (Picture shows half size 320yen/tax excl.)

Available Year-round

Ingredients used Local eggs (from Akishima)

Seasoned *Nihachi Soba* (*Wasabi*)

Price 800yen (tax excl.)

Available Year-round

Ingredients used *Wasabi* (from Okutama)



Chinese Cuisine *Gojyuban*

☎ 042-522-7472

URL <http://www.annex-tachikawa.com/gojyuban>



- 📍 1-4-5 Nishiki-cho, Tachikawa-shi
- 🕒 11:00 - 21:00 (closed 15:00 - 17:00 on weekdays)
- ✖ Bon Holidays and New Year Holidays
- 🚶 5 min. walk from JR Tachikawa Station South Exit
- 🚶 6 min. from Tama Toshi Monorail Line Tachikawa-Minami Station



Signature menu

Udo Ramen

Price 823yen
 Available Year-round
 Ingredients used Udo spikenard (from Hagita-en Farm, Tachikawa)

Organic Blueberry and Tomato Salad

Price 648yen
 Available Year-round
 Ingredients used Blueberries (from Manda Farm, Tachikawa)



Shichirin Ox Tongue *Danran Tei*

☎ 042-540-0229

URL <http://www.meat-c.co.jp/danrantei.htm>



- 📍 Coral Tachikawa 1F, 3-10-4 Shibasakicho, Tachikawa-shi
- 🕒 Weekdays 11:00 - 23:00
Weekends and Holidays 17:00 - 23:00
- ✖ Irregular
- 🚶 2 min. walk from JR Tachikawa Station South Exit



Signature menu

TOKYO X Itto Tabetsukushi

Price 980yen (excl.)
 Available Year-round
 Ingredients used TOKYO X Pork

TOKYO X Samgyoposaru

Price 720yen (excl.)
 Available Year-round
 Ingredients used TOKYO X Pork



Restaurant Il Pepe

(Palace Hotel Tachikawa)

☎ 042-527-1111

URL <http://www.palace-t.co.jp/>



- 📍 1F Palace Hotel Tachikawa
2-40-15 Akebono-cho, Tachikawa-shi
- 🕒 6:30 - 22:30
- ✕ Open everyday
- 🚶 3 min. walk from JR Tachikawa Station North Exit



Signature menu

Buffet "Salad Corner"

Price Buffet price varies depending on the season

Available Year-round

Ingredients Cabbage, *daikon* radish, cucumber, tomato, *okra*, pothehr mustard (from Tachikawa and Akishima)

Buffet "Ratatouille" and "Pickles"

Price Buffet price varies depending on the season

Available Spring to autumn

Ingredients Eggplant, zucchini, purple onions, kidney beans, cucumbers, carrots (from Tachikawa)



Teppanyaki Cuisine Asuka

(Palace Hotel Tachikawa)

☎ 042-527-1111

URL <http://www.palace-t.co.jp/>



- 📍 1F Palace Hotel Tachikawa
2-40-15 Akebono-cho, Tachikawa-shi
- 🕒 11:30 - 14:30 (Last call 14:00)
17:30 - 21:30 (Last call 21:00)
- ✕ Open everyday
- 🚶 3 min. walk from JR Tachikawa Station North Exit



Signature menu

Garlic Rice with Tama Eggs

Price -

Available Year-round

Ingredients Eggs laid in the Tama Area (Tachikawa, Machida, etc.)

Teppanyaki Grilled Vegetables

Price -

Available Year-round

Ingredients *Daikon* radish, squash, green peppers, eggplants (from Tachikawa)



Japanese Cuisine *Keyaki*

(Palace Hotel Tachikawa)

☎ **042-527-1111**

URL <http://www.palace-t.co.jp/>



- 📍 2F Palace Hotel Tachikawa
2-40-15 Akebono-cho, Tachikawa-shi
- 🕒 11:30 - 21:30 (Last call 21:00)
- ✕ Open everyday
- 🚶 3 min. walk from JR Tachikawa Station North Exit



Signature menu

Simmered Vegetables

Price	1,188yen
Available	Depends on the season
Ingredients used	Bamboo shoots, <i>udo</i> spikenard, spinach, carrots (from Tachikawa)

Assorted *Tempura*

Price	4,752yen
Available	Depends on the season
Ingredients used	Butterbur sprouts, eggplants, angelica tree buds, broccoli, pimento peppers (from Tachikawa)



Chinese Cuisine *Zuirin*

(Palace Hotel Tachikawa)

☎ **042-527-1111**

URL <http://www.palace-t.co.jp/>



- 📍 2F Palace Hotel Tachikawa
2-40-15 Akebono-cho, Tachikawa-shi
- 🕒 11:30 - 21:30 (Last call 21:00)
- ✕ Open everyday
- 🚶 3 min. walk from JR Tachikawa Station North Exit



Signature menu

Chinese Appetizer: Sweet and Sour Pickles

Price	1,296yen
Available	Depends on the season
Ingredients used	<i>Udo</i> spikenard, cucumber, daikon radish (from Tachikawa)

Choice Lunch Set

Price	1,500yen/2,000yen
Available	Depends on the season
Ingredients used	Eggplant, pimento pepper, tomato, etc. (from Tachikawa)



hoccori *café

☎ 042-595-8379

URL https://m.facebook.com/hoccoricafe/?locale2=ja_JP

- 📍 1F Takara Bldg., 2-5-8 Shibasakicho, Tachikawa-shi
- 🕒 1:30 - 19:00
- ✖ Tuesdays and Wednesdays
- 🚶 5 min. walk from JR Tachikawa Station South Exit



Signature menu

Brown Rice and Black Curry

Price Lunch (11:30 - 14:30) 1,250yen
1,500yen after lunchtime (*comes with a colorful salad)

Available Year-round

Ingredients Vegetables, mainly from Tachikawa, such as onions, carrots, cabbages, etc. (no meat or fish is used) and ground black sesame

Salad Plate

Price 1,000yen (drink included) Available Year-round

Ingredients used Made from approximately 20 different types of vegetables from Tachikawa, such as Japanese mustard spinach, Chinese cabbage, leaf lettuce, bell peppers, carrots, cucumbers, mini tomatoes, etc.

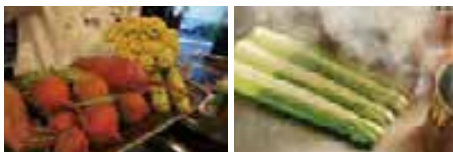


Teppan-yaki Senju

☎ 042-529-6787

URL <http://千珠.com/>

- 📍 1F Muto Bldg., 3-4-3 Akebonocho Tachikawa-shi
- 🕒 6:00 - 23:00
- ✖ Open everyday
- 🚶 10 min. walk from JR Tachikawa Station North Exit



Signature menu

Daily Fresh-Gathered Salad

Price 1,000yen Available Year-round

Ingredients Seasonal vegetables from Tachikawa (Sugar beets, *luna*, *momonosuke* radishes, radishes, Japanese mustard greens, lettuce, etc.)

Original Vegetable Bagna Càuda

Price 1,800yen Available Year-round

Ingredients used Seasonal vegetables from Tachikawa (Potatoes, tomatoes, zucchini, okura, eggplants, cabbage, carrots, etc.)



La Befana Kichijoji

☎ 0422-71-4800

URL <http://www.jack-pot.co.jp/>



- 📍 1-10-11 Kichijoji Minami-cho, Musashino-shi
- 🕒 11:30 - 14:30/17:00 - 22:30
- 🗓 Open everyday
- 🚶 3 min. walk from JR Chuo Line Kichijoji Station Park Exit
3 min. walk from Keio Inokashira Line Kichijoji Station



Signature menu

Mixed Vegetables and Anchovies

Price	800yen (tax excl.)
Available	Year-round
Ingredients used	Seasonally available vegetables

Sicilian Rouse and Basil Chilled Pasta

Price	1,400yen (tax excl.)
Available	July to early September
Ingredients used	Sicilian rouse, basil (from Mitaka)



Musashino Vegetable Cuisine

Miluna-na

☎ 0422-30-9195

URL <http://ameblo.jp/miluna-na/>



- 📍 2-17-5-102 Kyonan-cho, Musashino-shi
- 🕒 11:30 - 15:30 (Last call: 14:30)
17:30 - 21:00 (Last call: 20:00)
- 🗓 Wednesdays, 1st Thursday
(Open if a regular closed day is a Holiday, then closed the next day)
- 🚶 6 min. from Chuo Line Musashi-Sakai Station South Exit



Signature menu

Vegetables and Multigrain Rice

Price	950yen
Available	Year-round
Ingredients used	Uses locally grown seasonal vegetables from Musashino and Koganei

Vegetable Curry

Price	950yen
Available	Year-round
Ingredients used	Uses locally grown seasonal vegetables from Musashino and Koganei



Tar TarT

☎ 0422-22-1495

URL <http://www.cporganizing.com/tartart/>

- 📍 2nd Quarter, Atre 1F, 1-1-24 Kichijoji Minamicho, Musashino-shi
- 🕒 9:00 - 23:00
- ✂ Same as Atre Kichijoji
- 🚶 First floor of Atre Kichijoji Station



Signature menu

Gourmand's Luxury Salad with Vegetables from Musashino ~seafood~

Price	1,550yen
Available	Year-round
Ingredients used	Seasonal vegetables from Musashino (direct from a farm in Kokubunji and grown in Musashino)

Tankaku Beef Shoulder Roast Steak Salad

Price	2,400yen
Available	Year-round
Ingredients used	Seasonal vegetables from Musashino (direct from a farm in Kokubunji and grown in Musashino)

Dining & Gallery *Mayugura*

☎ 0428-21-7291

URL <http://www.mayugura.com/>

- 📍 3-127 Nishiwake-cho, Ome-shi
- 🕒 11:00 - 17:00 (Last call 16:30)
- ✂ Open everyday (Except New Year Holidays)
- 🚶 10 min. walk from JR Ome Station or Higashi-Ome Station



Signature menu

Vegetarian Plate

Price	1,000yen
Available	Year-round (Changes monthly)
Ingredients used	Sunny Lettuce, Snow peas (from Ome), <i>norabona</i> (from Akiruno)

Mayu-zen Set

Price	1,600yen
Available	Year-round (Changes monthly)
Ingredients used	Spinach, bamboo shoots (from Ome)

